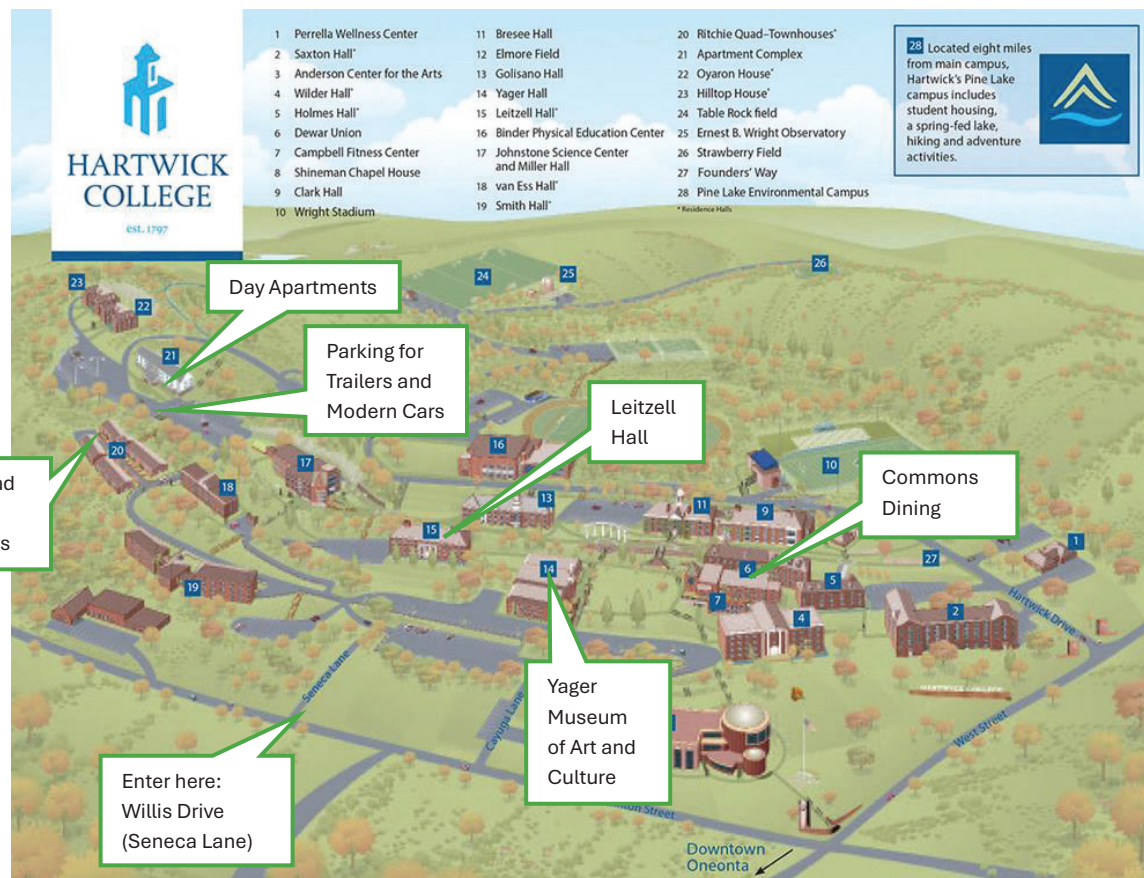




Beautiful Hartwick College is a private liberal arts college in Oneonta, New York. The institution was founded as Hartwick Seminary in 1797. In 1927, the seminary became a four-year college and moved from Hartwick, New York to its Oneonta location. Over 1100 Students attend Hartwick. Hartwick College's main campus features an extensive trail system spanning approximately ten miles, open to students, college employees, the public and Franklin attendees! Check out the HH Franklin Club website [www.franklincar.org](http://www.franklincar.org) to view a video of this gorgeous school!

Oneonta is one of the northernmost cities of Appalachia. Home to the State University of New York at Oneonta and Hartwick College.



Hartwick College is easily accessible from the north on Highway 28; from the east, west and south off I-88.

It is 111 miles from Syracuse International Airport and 79 miles from Albany International Airport.

Please do NOT enter Hartwick Drive. From Chestnut St (Routes 7 and 23) take West St., then left onto Cherry, then left onto Clinton St. and then right to enter the campus on Willis Dr (Seneca Lane). Signs for "Franklin Trek Registration & Trailers" will be posted at those intersections and within the campus to guide you to

Registration and the Trailer Parking area. John Strawway and Jeremy Scholz will be on site to assist.

## WELCOME TO THE TREK!!

### Saturday, July 11

The doors of the Registration Desk in the lobby of the Day Apartments will open at 1:00PM to welcome you. Park in the large lot outside the Day, register, then you will be directed to where you will park to get to your dorm. After getting settled, join us at 5:00PM for beer, wine and soft drinks and an International (German, Italian and Puerto Rican) buffet along with signature cocktails, served in The Commons (Dewar



Hall). Enjoy the beautiful views of the hills and valleys around Hartwick College. Throughout the campus you will find many Adirondack chairs to relax in. After dinner catch up with old



friends and meet some new. Andy Wittenborn will be showing and narrating photos from previous Treks as we enjoy a cash bar and snacks.

### Sunday, July 12

After breakfast in the Commons (Dewar Hall) there will be various options for the



day. Head over to Damanschke Field (home of the Oneonta Outlaws) for their big annual car show hosted by the Oneonta Reminiscers (bring your Franklin!) and tour this historic baseball field which opened in 1906. During its lifetime, it was home to multiple farm

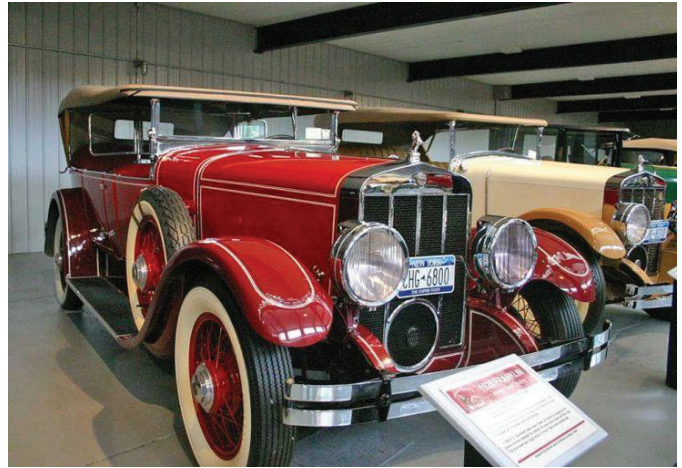
leagues and notable players played there including Babe Ruth and John Elway. While at the car show you will have the opportunity to tour this iconic stadium. Food is available on your own at the stadium or have lunch in town. This is a great opportunity to get to know our new Trek Home! A list of



restaurants open on Sunday will be available in your registration packet. You might want to hit the shops in Oneonta like Shakedown Street and The Green Toad Bookstore or visit the Yager Museum of Art and Culture on the campus of Hartwick College. Oneonta offers self-guided tours of its historic downtown available on the Greater Oneonta Historical Society website - <https://oneontahistory.org>. After dinner we're back for happy hour and an evening of entertainment.

## Monday, July 13

Today we will take a scenic drive to Norwich, New York and the Northeast Classic Car Museum featuring over 170 antique, classic and vintage cars and 28 motorcycles. The museum houses the largest collection of Franklins on display, including the third one ever built and the last built! Lunch will be provided by Kandi's Food Truck in the meeting room of the museum which promises to be delicious, especially her desserts! After lunch we'll again enjoy the beautiful Catskill Mountains, part of the Appalachian Mountain Region, and head back to Hartwick for dinner and an evening of entertainment and socializing.



## Tuesday, July 14



This will be a longer driving day. We'll leave early in the morning in staggered groups and head to Hyde Hall (Cooperstown, NY); the beautifully restored home of George Clarke and his descendants built between 1818 and 1835. Located in Glimmerglass State Park; when built it was possibly the largest domestic structure built in the US

between the Revolutionary and Civil Wars. After Hyde Hall we will drive around Otsego Lake toward Fly Creek Cider Mill (Fly Creek, NY) for lunch and shopping. Tour the cider mill, taste the different ciders, check out their collection of vintage John Deere tractors. There is something for everybody!



Then we head back to Hartwick for dinner. Tonight a local historian will give a presentation about the history of Oneonta while we enjoy snacks and a cash bar.

## Wednesday, July 15

Today we head in a different direction to Hanford Mills (East Meredith, NY) where you will see the power of water and learn about the historic machinery that runs the mill. The tour includes demonstrations of their 1926 Fitz overshot waterwheel and historic water-powered woodworking and milling machinery. Wander through the outbuildings and learn about the museum's history. We will be enjoying a box lunch provided by the College in the Pavillion on site. This is great opportunity for a group picture with our Franklins.



After lunch we'll head back to Hartwick College for the board meeting and annual meeting.

Tonight is the Fashion Show

hosted by Lisa Christensen. Bring your vintage-looking fashions, new and old and strut your stuff!

## Thursday, July 16

Today we'll have tech sessions—you never know what you might learn from our experts! If the tech sessions aren't for you, Hartwick's chef will have something fun planned that will spark your taste buds and whet your appetite! After the morning activities we will embark on a



Road Rally (expertly planned by Sara Schopmeier!) ending at the pavilion by the lake at Gilbert Lake State Park (Laurens, NY) where we will enjoy a box lunch provided by Hartwick. You can stay after lunch and enjoy the many amenities the park offers like boating, swimming, disc golf and more. Be sure to leave in time for the famous Franklin

auction back at Hartwick.

Tonight, will be our final banquet and the theme is Tropical! Bring your best resort duds (Hawaiian shirts and sundresses)! Stay after to review the week and spend those last minutes with friends.

## Friday, July 17

After breakfast in the Commons, we'll say goodbye to all our wonderful Franklin friends as we close out another fun Trek.

Unless otherwise noted every evening's entertainment will take place in the Commons in Dewar Union. Except for the banquets, it will be a cash bar.

Morning coffee will be available every morning at 6:30AM before breakfast.

Mealtimes are Breakfast at 7AM-9AM and Dinner at 5PM-7PM. For the banquets we will meet at 5PM for social hour with dinner at 6PM in the Commons.

The speed limit is not to exceed 15 MPH on the entire campus. Please follow signs for trailers and general parking. John Strawway and Jeremy Scholz will be assisting.

The Parts Department, Club Merchandise and registration will all be on the first floor of the Day Apartments.

## **Register Now for the 72<sup>nd</sup> Annual Franklin Trek**

All registrations will be done online at the Members Only Section of the Franklin Club website: [www.FranklinCar.org](http://www.FranklinCar.org). Click on Members Only at the top right of the screen. On March 30, all paid members received the updated 2026 ID and Password on March 30 to get into this part of the website from our wonderful Membership Services people, Bob and Darla Metro. Check your spam folder if you didn't see it. Online registration is easy.

### **INFORMATION ABOUT HOUSING CHOICES AND WHAT TO EXPECT**

There are 3 choices of housing at Hartwick College. All dorms are ADA compliant and are air conditioned. The twin extra-long beds will be made prior to our arrival with a fitted sheet, flat sheet, blanket, pillow and pillowcase. **BRING YOUR OWN** bath towel, hand towel, face cloth and bathmat. Virtual tours of each housing choice are on the Members Only section of the Franklin Club Website.

**Day Apartments** – (10-minute walk to the dining hall) these are apartments with either 4 rooms and 2 baths or 2 rooms and 1 bath with a full kitchen, dining area and living room. Laundry room is on the second floor. There is an elevator to all 3 floors.

**Ritchie Townhouses** – (7-minute walk to the dining hall) like the apartments but each townhouse is free standing, with 1 double room with a private bath and 2 singles with a shared bath but the **sleeping rooms are on the second floor**. All the Townhouses have a full kitchen, dining area and living room on the first floor. Laundry room is within the Townhouse complex. **No elevator**.

**Leitzell Hall** – (5-minute walk to the dining hall) more like a typical college dorm. There are 4 beds per suite, some have doubles and two singles, others have two doubles, with one shared bath per suite. There is a common lounge on the first

floor that has a full kitchen. Laundry room is on the second floor. **Three stories in the building and there is no elevator.**

To keep prices as low as possible, all rooms must be at maximum capacity. Please choose the Trekkers with whom you would like to room, or the Trek Registrar will allocate your housing in the dorm of your choice. Priority will be given to those attending for the full 6 days.

**Everyone must register online.** If you are staying on campus but will **attend for fewer than 6 days**, PLEASE register online and the Trek Registrar will be in touch with you. If you have trouble accessing the registration form, contact Trek Registrar Susan Roberts.

**Registration fee:** \$65 for the first person, \$30 for each additional attendee over age 8.

**On Campus package** plans include room accommodation, all meals, tour activities, and evening hospitality with a cash bar. Children under 8 who stay with their parents/grandparents in a sleeping bag and air mattress will not be charged a full room rate. Children under 3 are free.

**Off Campus package** plans include all meals, tour activities, and evening hospitality with a cash bar. Breakfast is not included.

**All prices in the chart below are per person.**

Days Stay	Adult/Teen/Kid Leitzell Dorm	Adult/Teen/Kid Richie Quad	Adult/Teen/Kid Day Apartment	Kid In Room (8 to 3 years)	Adult/Teen Off Campus
6	\$ 850	\$ 1010	\$ 1135	\$ 550	\$ 550
5	\$ 760	\$ 935	\$ 1050	\$ 470	\$ 470
4	\$ 660	\$ 795	\$ 975	\$ 390	\$ 390
3	\$ 520	\$ N/A	\$ N/A	\$ 310	\$ 310
2	\$ N/A	\$ N/A	\$ N/A	\$ N/A	\$ 230

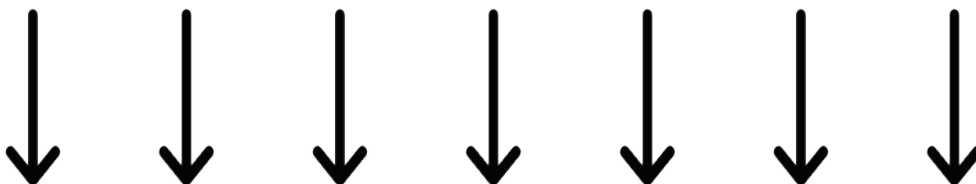
**REGISTER ONLINE FOR THE TREK TODAY!**

GO TO: [www.franklincar.org](http://www.franklincar.org)

72nd Franklin Trek  
c/o Susan Roberts  
52 Butler Ave.  
Wakefield, MA 01880-5106

Presorted  
Standard  
U.S. Postage  
**PAID**  
Lansing, MI  
Permit 933

Return Service Requested



**POTENTIAL FOR CASH AWARD FOR MEMBERS WHO BRING AND  
DRIVE THEIR FRANKLINS AT THE TREK**